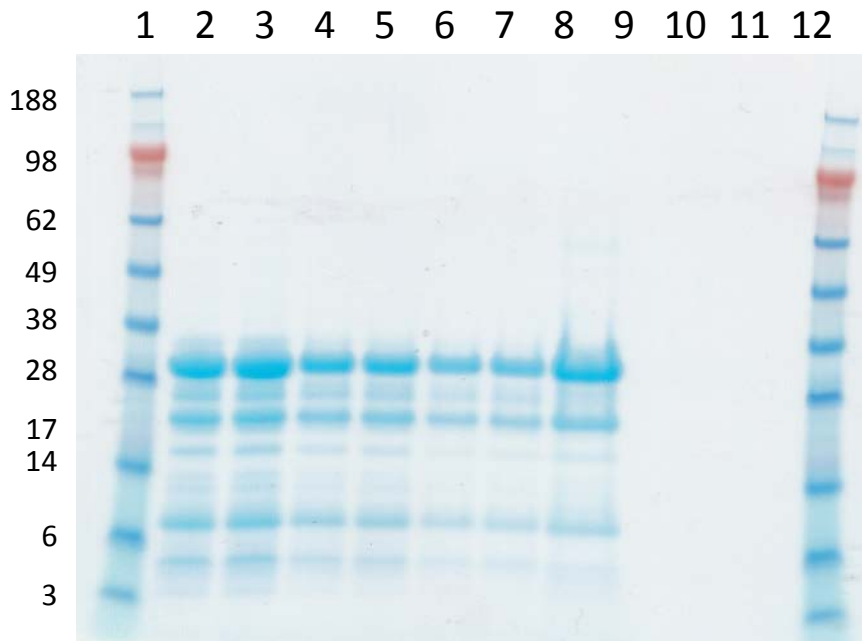


Gel Electrophoresis Data

Product	PSA	Protocol	Q0080
Catalog Number	497-11	Lot Number	P69436
Analyst	MKJ	Date	11/12/2012
Gel	4 – 12% Bis-Tris	Lot Number	12-10-298
Running Buffer	MES-SDS	Lot Number	12-06-182
Marker	See Blue +2	Lot Number	882127
Stain	Simply Blue Safe Stain	Lot Number	12-09-260



Lane	ID	Quantity
1	Marker	10 uL
2	P69436	12 ug
3	P69436	12 ug
4	P69436	4.8 ug
5	P69436	4.8 ug
6	P69436	1.2 ug
7	P69436	1.2 ug
8	Control	NA
9		
10		
11		
12	Marker	10 uL

Conclusions

1. A main band consistent with the molecular weight for PSA (30,000) was observed.
2. Minor bands were observed at approximately 5,000 - 25,000 mw.
3. The results for lot P69436 were consistent with the control.